



A step-by-step program designed to easily identify assets using today's technology

An identity management system must be flexible enough to satisfy government's demand in accounting for assets. **TraxFast 34** can identify and track your assets whether inside a building or outside at a remote location. In fact, the asset can be anywhere in the world and still be known to **TraxFast 34** no differently than any other asset. An asset can be anything you want to identify because of its value, security, regulation, importance or for any other reason that justifies the accountability and identification of an item .

BENEFITS OF THE TraxFast 34 ASSET TRACKING SYSTEM

- **ELIMINATES HUMAN ERROR AND MANUAL RECORDING OF ASSETS**
- **MAINTAINS AN AUDIT TRAIL FOR EACH INDIVIDUAL ASSET**
- **DETERS THEFT AND DISCOURAGES UNAUTHORIZED MOVEMENT OF ASSET**
- **PHYSICAL INVENTORY OF ASSETS ARE EITHER ELIMINATED OR SIGNIFICANTLY SIMPLIFIED**
- **FACILITATES TRACKING OF LEASED PRODUCTS AND MANAGEMENT OF MAINTENANCE SCHEDULES**
- **ASSISTS IN CONFORMING TO THE GASB34 STANDARDS**

Information is power and time is currency. You need to know exactly what you have and accurately track it for depreciation, taxation and other important factors. Lost, stolen or misplaced assets can mean the difference between success and failure. Until now, it has been extremely difficult to track assets.

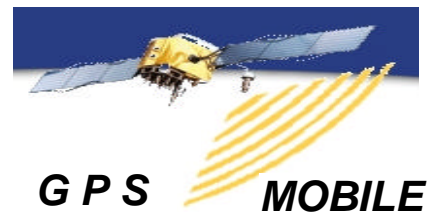


TraxFast 34 is divided into three processes; 1.) identify the scope and parameters of asset tracking such as buildings, locations, and types of assets; 2.) tag and barcode scan the assets; and 3.) generate the reports required to analyze and record assets. The **TraxFast 34** Asset Management System operates using field data collection devices called PDA (*Personal Digital Assistant*) handheld computers. The PDA utilizes the Pocket PC operating system and can include an integrated laser scanner for the purpose of reading and interpreting barcodes. Also, an optional *GPS or RFID Receiver Module* can be added to the PDA for capturing geographical coordinates of an asset. For those valuable or *hard to describe* assets, an *Integrated Camera* can be added to the PDA for color picture taking and storage with the asset's data. Reports and inquiries are included in the **TraxFast 34** Management application residing on a PC using the Windows operating system. Once **TraxFast 34** is installed on your computer or network, you can start creating barcode Worksheets and Labels for use in identifying locations and assets. Next, physically tag those assets. Finish by generating reports to give you the information you need to account for those assets.

management application residing on a PC using the Windows operating system. Once **TraxFast 34** is installed on your computer or network, you can start creating barcode Worksheets and Labels for use in identifying locations and assets. Next, physically tag those assets. Finish by generating reports to give you the information you need to account for those assets.

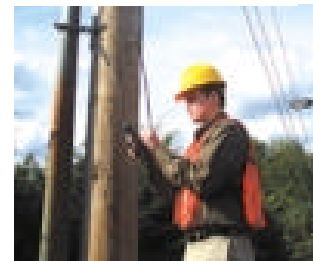


TraxFast 34 lets you identify your assets quickly and accurately. You can use the handheld to capture handwriting or use the virtual keyboard to identify those assets. Choose the barcode labeling and scanning products to speed up the process. Or take a picture of the asset to make sure there is no doubt about its presence and value. Should your assets be located outside, add the GPS option and you will get the geographical coordinates of the asset within a three meter accuracy reading. Whatever your needs are, by selecting or combining **TraxFast 34** flexible features, **TraxFast 34** is the solution.



The first time you identify an asset, all information about that asset is retained by **TraxFast 34**. From that moment any movement of the asset, whether inside the building or outside, is recorded by **TraxFast 34** so reporting is accurate at the time of inquiry. Taking later inventories of your tagged assets is a snap. All you have to do is scan a barcode label and the asset is verified because **TraxFast 34** already knows the identity of the asset.

Whether remote or local, your asset data can be transmitted and updated into your **TraxFast 34** network for immediate reporting and accounting. Any data corrections or additions can easily be entered into the **TraxFast 34** PC system. All information stored and reports generated use Microsoft Access for easy retrieval and integration to other accounting systems that need the information.



TraxFast 34 ASSET TRACKING PROCEDURE

STEP 1: Identify Yourself
Scan your badge once and it will redisplay until unit is turned off.

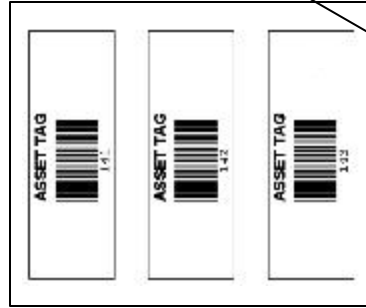


STEP 2: Identify Main Location

Scan from a barcoded sheet. Will redisplay until a new location is scanned.

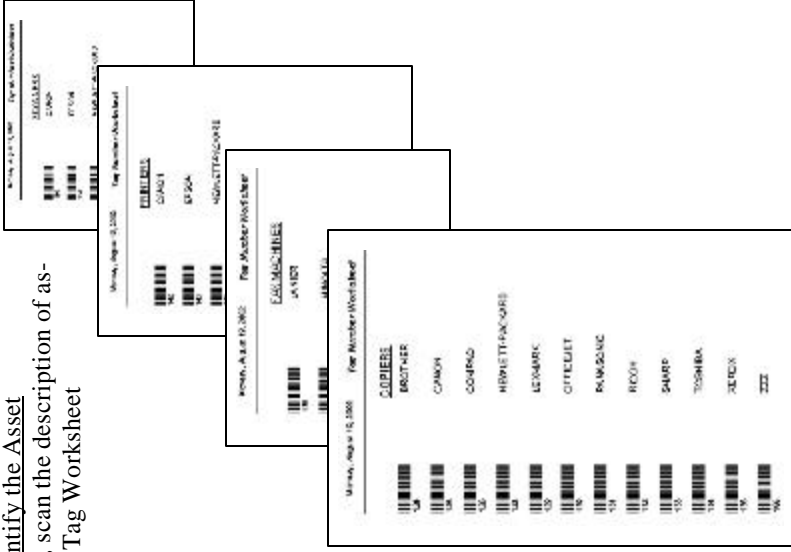


STEP 3: Identify the Detail Location
Key-enter the location that further identifies where the asset is located. Will redisplay until another entry is performed.



STEP 4: Label the Asset
Remove a preprinted label, scan and apply to asset.

STEP 5: Identify the Asset
If new asset, scan the description of asset from the Tag Worksheet



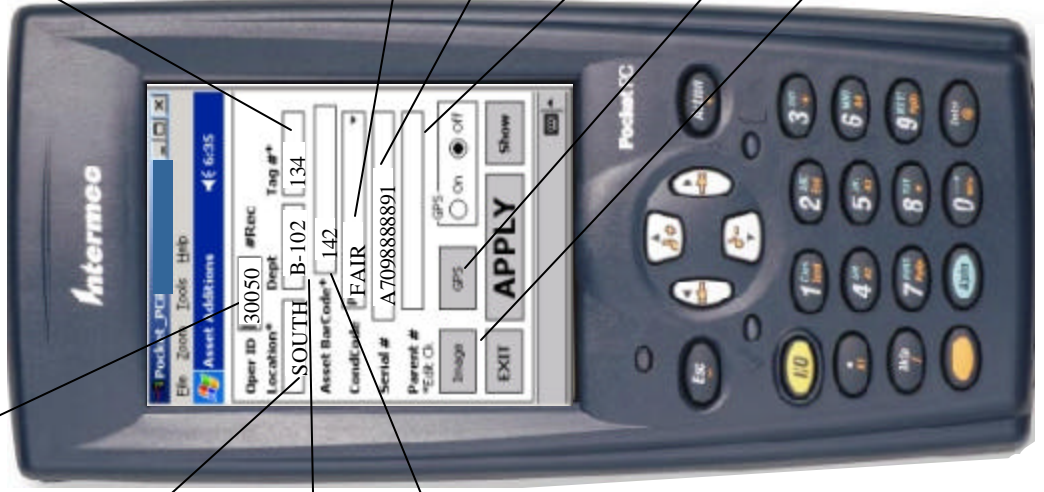
STEP 6: Identify Condition of Asset
Select the condition from a list box.

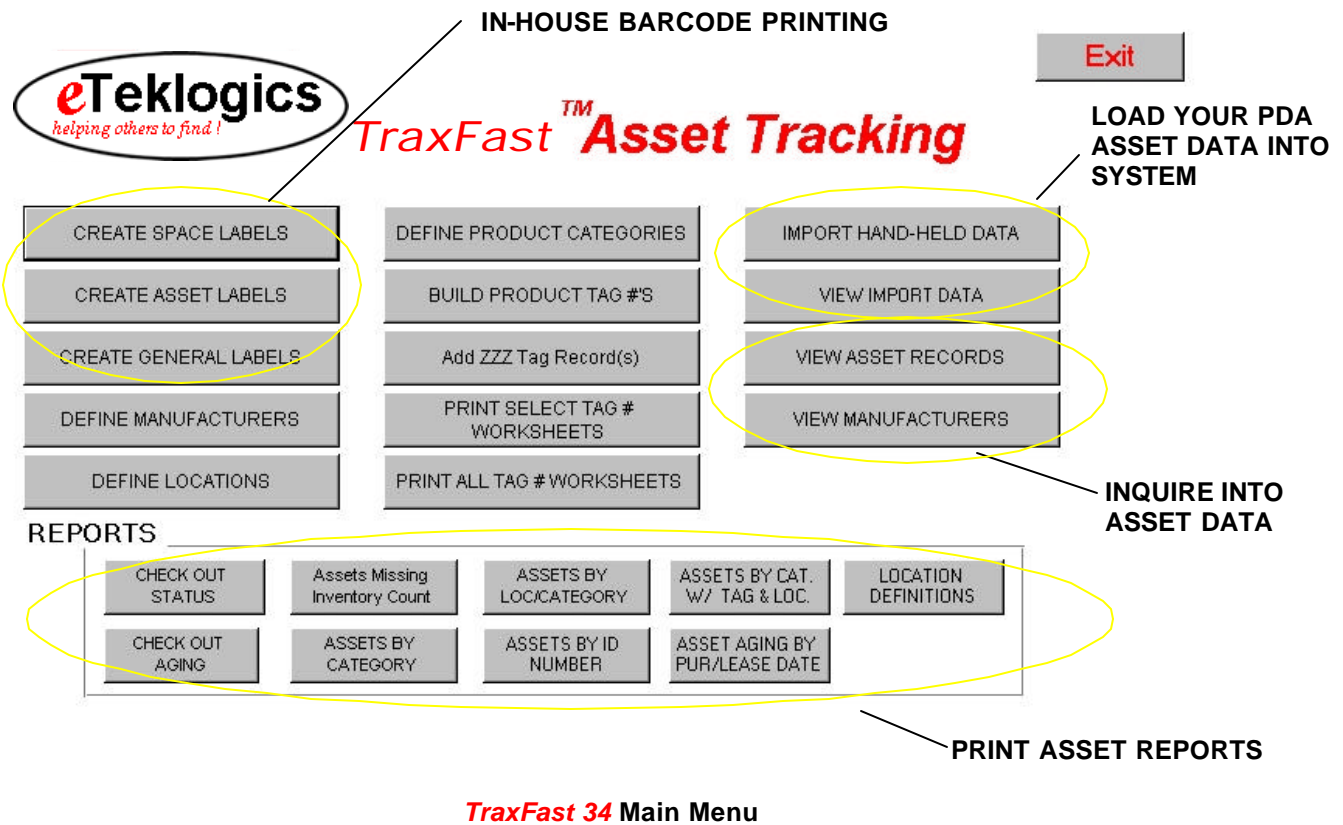
STEP 7: Identify the Serial Number
Scan or key-enter from the serial number label found on asset.

STEP 8: Identify Kit
Scan or key-enter the parent tag if asset is part of a kit.

STEP 9: Identify GPS Coordinates
Select this option should you want the asset identified by geographical coordinates.

STEP 10: Take a Picture
Attach a picture to the asset record by selecting the Image option.





TraxFast 34 Main Menu

Now is a great time to get your assets identified and the depreciation expense reported according to the GASB34 accounting standards. Besides conforming to the standards, your use of the **TraxFast 34** system will bring you many other benefits in streamlining your operations.

TraxFast 34 provides a quick and efficient method of collecting and storing information about assets. It answers:

1. **What assets do I own?** – **TraxFast 34** will identify those assets to the level of detail you need. **TraxFast 34** will not only identify the manufacturer and model number of the asset but will get down to the level of serial number and condition of the asset, if needed. If that is not enough, a picture can be taken and attached to that asset record for visual verification and valuation.
2. **Where are my assets?** – **TraxFast 34** directs you to that asset at the level you want. Building, floor, department, cubicle, person or any other combination can easily allow you to find and verify that asset. If that is not enough because your assets are located outside of buildings, you can activate the GPS recording and get the geographical coordinates that will identify the exact location of the asset at that moment. **TraxFast 34** will track any movement of that asset as time passes whether the asset has been permanently moved or borrowed with intent of return.
3. **What are my assets worth?** – **TraxFast 34** will retain record of value of assets that can be used independently or exported to your accounting system for its reporting purposes.
4. **What assets require maintenance?** – **TraxFast 34** will monitor the condition of an asset. If maintenance is needed, a schedule can be attached to the asset and used for directing the necessary activities. Reporting of material and labor cost will be retained for further analysis.

Begin with the **TraxFast 34** Startup Kit and expand as you get comfortable with the procedures and operation. **TraxFast 34** is built modular where equipment and functionality can be added at anytime. This allows you to minimize initial costs and then expand without losing previous investment. Or, if you are not a first time user in working with asset accountability, add the options to the base kit that will give you immediate payback in managing your assets now. Either way, **TraxFast 34** means “flexibility” to your asset management program.



Get your Starter Kit for as little as \$ 2,595.00 !

Your kit will contain:

- **TraxFast 34** Asset Tracking Software CD
 - Barcode Labels for Assets and Locations
 - Operator Badges
 - Step by Step Installation and User Guides
 - 90 Days of Help Support
- * PDA Handheld Computer shown is not included and must be purchased separately

Should you want to get started with our Professional Series and take advantage of other **TraxFast 34** offerings, request a specification sheet for any of the following options that will configure your **TraxFast 34** solution to your immediate and future needs.

- Industrialized PDA Handheld Computer – Add the protection to your PDA that will protect it from accidental fall and the elements of the weather.
- PDA Barcode Laser Scanner – Identify your assets faster by scanning barcodes instead of using the PDA keyboard for data entry.
- PDA RFID Receiver – Capture asset information from a transponder “smart label” where barcodes cannot easily be scanned.
- PDA GPS Receiver – Capture the geographical coordinates of the asset.
- PC and PDA Mapping – View a map that shows exactly where outside assets reside with relationship to your position.
- PDA Digital Camera – Choose color or black and white pictures for your asset portfolio.
- Barcode Printer – Print barcode worksheets and your own customized barcode labels for asset and location identification whenever you need them.
- Extended Support – Should your **TraxFast 34** implementation involve multiple sites or your schedule dictates a phased-in approach add the comfort of knowing **TraxFast 34** support is a telephone call away. One year and longer support programs are available.